

Two Neptune Drive

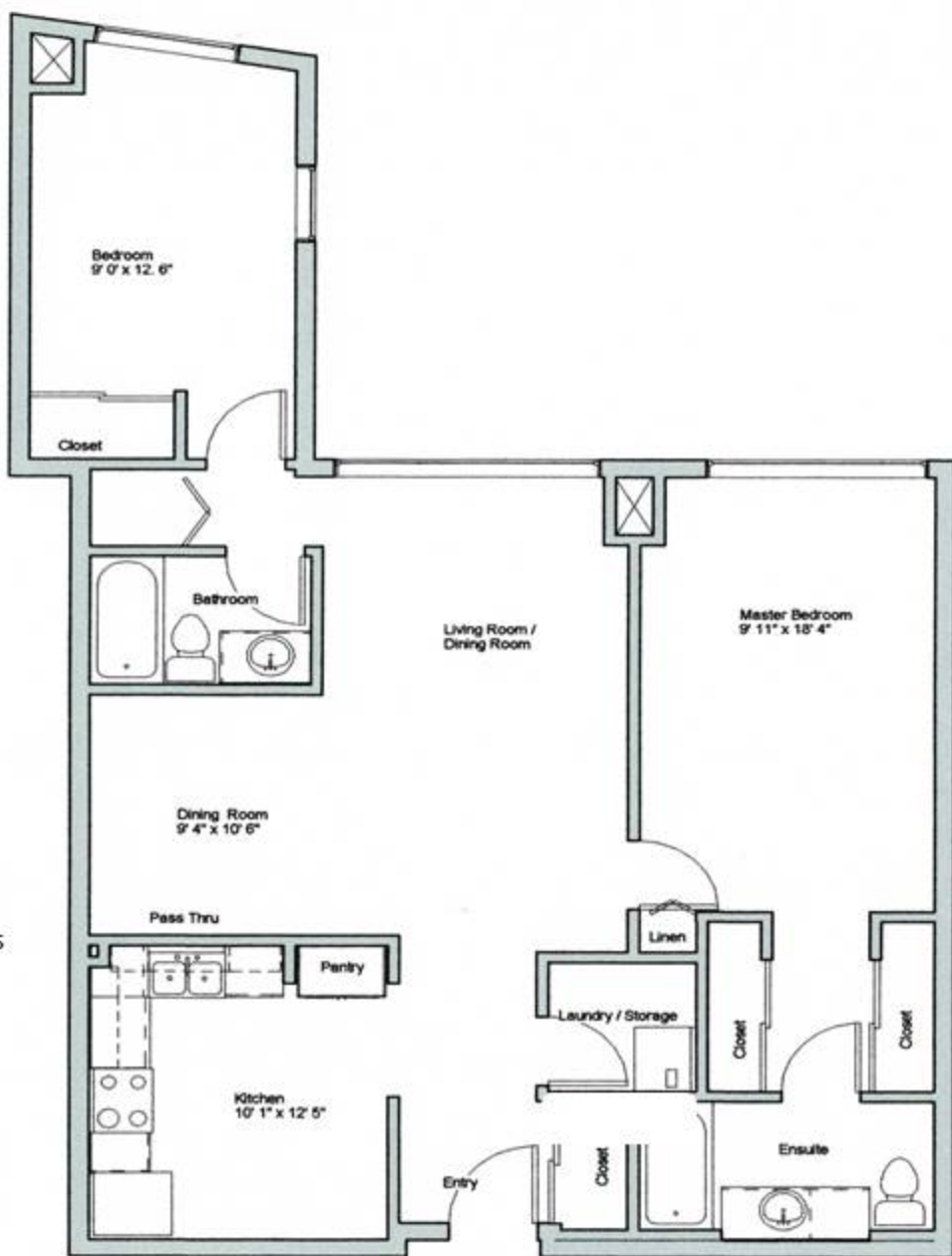
• A Baycrest Residential Property

The Crestview - 1108 sq. ft.

Renovated Suites

Include:

- ✓ New kitchen appliances and cabinets
- ✓ New bathroom vanity and mirror
- ✓ New laminate and tile flooring throughout
- ✓ New light fixtures
- ✓ Wide doors to accommodate mobility aids
- ✓ Freshly painted
- ✓ Easy-to-reach electrical outlets and receptacles
- ✓ Lever hardware throughout
- ✓ Pressure balanced shower controls
- ✓ Rocker-style light switches
- ✓ Ensuite washroom walls are pre-blocked for installation of grab bars
- ✓ In-suite laundry
- ✓ Fire alarms and sprinklers in all units and throughout the building



The rental fee includes: storage locker, use of all building amenities and services ; access to the Wagman Community Centre, heat, condo maintenance fees and city taxes.

Rental fees do not include parking or electricity. Underground parking is available at \$75/month.